



PREMIUM STONE-COATED METAL ROOFING SYSTEMS

www.Allmet.com



PROJECT GUIDE
COMMERCIAL / CHURCH / HOA

BEAUTIFUL & DEPENDABLE FOR LIFE!



Lightweight: Allmet roofing systems offer the freedom of choosing a product that fits your aesthetic wants without sacrificing performance. Allmet roofing systems only weigh 1.4 lbs per square foot which is one-seventh of the weight of traditional tile products. Additionally, the lightweight Allmet system provides safety by reducing the threat of roof collapse.

An independent survey performed after the Northridge, California, earthquake (January 17, 1994) found only minor damage to approximately 1% of the homes protected by metal roofing. In contrast, more than 50% of the concrete and clay roofs observed had significant damage.

Allmet Steel Panels are stamped from 26-gauge Galvalume[®] coated steel. Beautiful crushed stone chips are applied with non-petroleum-based resins for lifetime adhesion, making an Allmet Roof truly last forever!





NO OTHER ROOF COMPARES

- Lifetime Non-Prorated Limited Warranty
- Truly Lightweight, 1.4 lbs per square foot
- Class A Fire Rating
- Class 4 Impact Rating, 2.5" Hail Stone Warranty
- 120 mph Wind Warranty
- Will never warp, crack, rot, or break
- Energy-Efficient
- Miami Dade Approved

THE BEST PROTECTION



WIND. Allmet's stone-coated metal roofing systems have been independently evaluated and tested, surpassing industry standards for high-velocity winds and wind-driven rain. Unlike other manufacturers that only offer wind warranties for a limited time, or not at all, our 120 mph wind warranty is good for life.



HAIL & ICE. Through careful research and testing, we have developed 26-gauge steel panels that will stand up to a beating! Our **Class 4** impact rating and 2.5" hail stone warranty will allow you and your insurance company to rest easy. Allmet installation methods also offer superior protection against snow and ice damming.



FIRE. Allmet's non-combustible steel panels keep fire at bay. The interlocking design of our roofing systems repel dangerous wind-blown embers and our lightweight system reduces the risk of roof collapse. In the city or country, our **Class A** fire rated roofing system will keep you safe. Visit us online to read our customers' real life fire-related stories.

INSTALLATION

Customize your home with multiple styles, colors and installation techniques. Allmet's comprehensive line of components and accessories allows for maximum flexibility. All of our profiles can be installed on solid surfaces from the streamlined look of shingles to the beauty of high profile "S" tile.



COUNTER-BATTEN INSTALLATION

Batten Installation: When the Allmet roofing system is installed on top of a batten or counter batten grid, a larger air space is created which substantially reduces heat gain in the hot summer months. In cooler climates the air space helps stabilize the roofing temperature which can substantially reduce ice damming. With a batten system, you will take full advantage of the integrated high-energy efficiency of an Allmet roofing system.



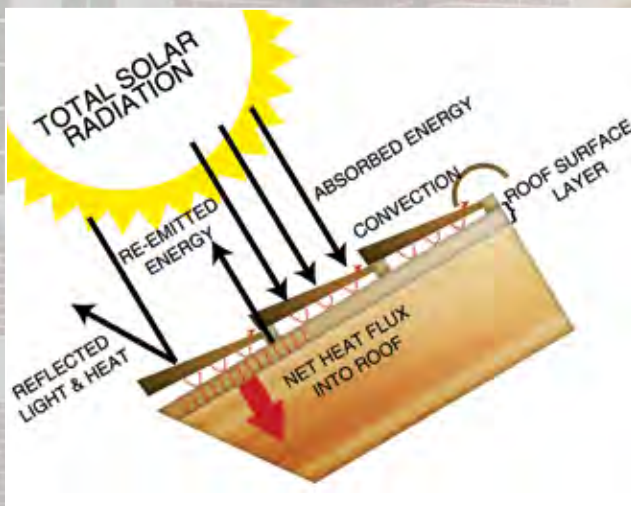
BATTEN INSTALLATION

A Dry Under-Deck System: When installed as designed, Allmet's interlocking roofing is a dry under-deck system.

Most Energy-Efficient:

No matter the color or climate, Allmet's attractive stone-coated metal roofing systems deliver solid results. Allmet uses highly UV-reflective granite stone chips which are bonded and sealed to the tough

Zinc-Aluminum steel substrate. The Allmet system allows air to pass between the deck and the panels.



FINAL ROOFING SYSTEM

Allmet has over 30 years' experience in the roofing industry and distributes its products worldwide. Our durable coatings incorporate a colored blend of granite stone chips to provide the natural hues and beauty of traditional roofing, backed by the strength of interlocking steel panels. Our comprehensive line of matching valleys, rakes, parts and accessories are designed to tackle any project offering the most finished and practical roofing solution.

Roof Ventilation: Our batten mounted installation technique provides optimal ventilation when balanced with soffit and ridge airflow. When venting at the ridge is not possible, we offer a low profile EZ vent. Like all of our finishing parts and accessories, these vents are efficient, durable and stone-coated to match your roof.



J-CLIP FASTENING TO DECK UNDER THE PANEL

Brackets: A special Universal 'J' Bracket can be installed with all batten systems. They provide a clean weatherproof installation employing a strong galvanized Universal 'J' Bracket that can be used for mounting solar panels, air-conditioners, evaporative coolers, roof walkways and more to the roof.



SOLAR PANELS INSTALLED ON A STONE COATED METAL ROOFING SYSTEM

- Location: Kahala Estates, Hawaii

ALLMET'S ECO-COMMITMENT:

Allmet roofing products offers one of the most environmentally friendly roofing systems in the world. The company is committed to delivering quality products and services and enforce sustainable eco-business practices.

- Allmet is made with over 30% recycled steel
- Steel is 100% recyclable
- Our steel suppliers have recycling facilities on-site
- We recycle over 90% of our production waste
- Our steel is California Title 24 compliant
- Allmet roofing products can help qualify for LEED points
- Our packaging is purchased from vendors who recycle

Allmet roofing panels are stamped from 26-gauge Galvalume® steel, and are designed to take full advantage of metal characteristics in a formed, interlocking and superior sealing panel. Choose from our full range of profiles, parts, and accessories, for a premium durable roofing system with the added benefits of insulation, ventilation, and noise reduction.

SIGNATURE SERIES TILE

The beauty of old world architecture takes a giant leap forward with an Allmet Continental roofing system. Woodshake profile offers the best of both worlds, delivering the look of wood shake but with the strength and security of steel. Shadowline profile has the look of high-end slate roofing without the excessive weight or inherent problems associated conventional stone tile.

CONTINENTAL



WOODSHAKE



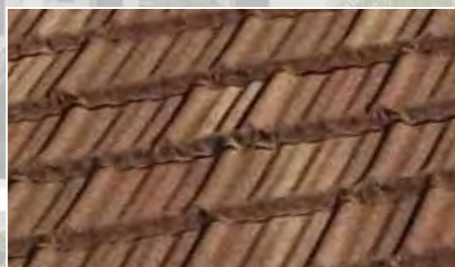
SHADOWLINE



DIMENSIONAL SERIES TILE

Dimensional series tile offers classic looks with form-fitting, bottom-locking flange coupled with excellent performance in both snow and ice. The series is offered in Woodshake or traditional style cement tile.

RIDGEWOOD



TALAVERA

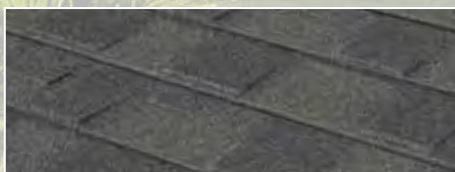


GRANITE RIDGE METAL SHINGLES

With far greater durability and value than traditional asphalt roofing products, steel shingles will never burn or absorb moisture. Additionally, our shingles have a 120 mph wind warranty, making them one of the most enduring roofing products available today. Granite Ridge shingles are produced in 6 popular colors.



Heather Blend



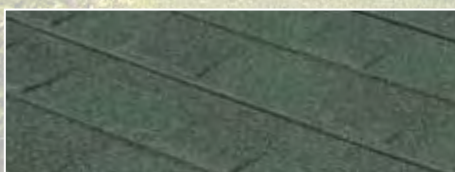
Onyx



Thunderstorm



Desert Sand



Forest Green



Aspen

AVAILABLE COLORS



860 - Autumn Gold



861 - Autumn Leaf



810 - Terracotta



812 - Mission Terracotta



811 - Jasper



863 - Evergreen



815 - Clay



817 - Mission Clay



824 - Almond



825 - Sandalwood



880 - Chestnut



899 - Café



831 - Weathered Stone



832 - Weathered Wood



836 - Natural Slate



837 - Naturalwood



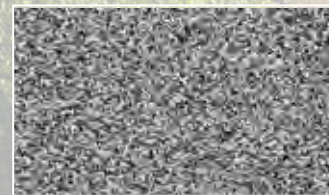
853 - Storm Blue



Energy Star Colors



846 - Dover White



824 - Driftwood

Item #	Color	Continental	Shadowline	Woodshake
824	Almond			S**
860	Autumn Gold	S*		
861	Autumn Leaf	S**		
899	Café			S*
880	Chestnut			S**
815	Clay	S**		
846	Dover White			
845	Driftwood			
863	Evergreen			
811	Jasper	S**		
817	Mission Clay	S*		
812	Mission Terracotta	S*		
836	Natural Slate			S**
837	Naturalwood			S*
825	Sandlewood			S*
853	Storm Blue			
810	Terracotta	S**		
831	Weathered Stone		S**	S**
832	Weathered Wood			S*

S* - Standard Variegated Color may require up to 2 weeks lead time.

S** - Standard Blended Colors may require 2 - 4 weeks lead time.

On Special Orders, Allmet reserves the right to ship and invoice any production of up to 5% above order quantities.

Note: All color chip pictures are taken in natural late afternoon light. Review under natural light for best color representation.

COMMERCIAL PROPERTIES

- An Allmet Steel Roof is the last roof you will need
- Withstands hail, fire, wind, even earthquakes!
- Energy-Efficient
- Beautiful under any conditions
- Adds to the value of any commercial property
- An Allmet roof is the answer to all roof-related problems associated with commercial buildings

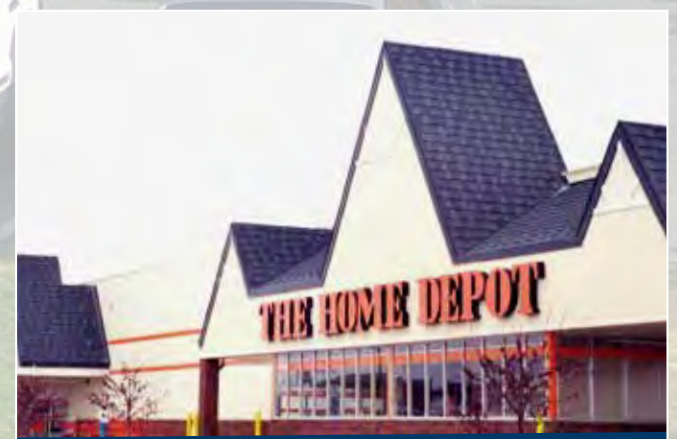


Not only will an Allmet stone-coated metal roofing system protect a commercial building from all of the elements, but it will look beautiful forever too. Commercial building owners know that visually attractive buildings attract the best tenants.

With an Allmet roof, commercial building owners can put an end to re-roofing projects every 10-15 years.

Allmet's roofing products will also help to minimize costly maintenance and repair expenses. Plus, being one of the most energy efficient roofs available, imagine how much money can be saved in energy costs.

An Allmet Roof is the answer to all roof-related problems associated with commercial buildings.



HOMEOWNERS' ASSOCIATIONS

- Lifetime metal roofing systems that look like traditional residential roofs
- A variety of appealing colors to choose from
- Wood Shake, Tile, S-Tile and Shingle profiles
- Manufacturer support and representation throughout your entire project
- Adds value to your association

With Allmet Stone-Coated Steel Roofing your next re-roofing project will be your last. Homeowners' Associations around the country are choosing Allmet Steel as their #1 solution for all roofing problems. HOAs are tired of the constant problems and maintenance issues that inherently come with other inferior roofing products. There are not many expenditures as costly as re-roofing an entire association, not to mention the inconvenience to the owners.

By choosing Allmet, you are choosing to never worry about your roof again!

Only Allmet Steel Roofs can stand the test of time and help to minimize HOAs re-roofing and roofing-related repair fees.

With Allmet's industry leading Limited Lifetime Warranty, your association can rest easy knowing that there won't be any more large re-roofing projects.



CHURCH PROPERTIES

- Non-Prorated, Limited Lifetime Warranty
- Adds visible appeal to any church
- Helps maintain strength and beauty of historical churches
- Over time, an Allmet roof will save you money

Many churches are owned by its members and any roofing costs come from their pocketbooks. Choosing an Allmet stone-coated metal roofing system on your next roofing project will help to minimize your yearly roofing repair costs. With all of Allmet's money-saving possibilities, your roof can eventually pay for itself throughout its lifetime.

Allmet roofing will never rot, warp, break or split, and your roof will look beautiful for a lifetime. No matter where your church is located, Allmet Steel is the best choice for protecting your place of worship.

Don't settle for less expensive roofing alternatives for your church. Choose a roofing system that will allow its members to focus on much more important things. Allmet's strength and durability will withstand nature's harshest elements while enhancing your church's timeless beauty.



NO OTHER ROOFS COMPARE!

Protection & Benefits	Allmet Roofs	Concrete Tile & Shake	Fiber-Cement Tile & Shake	Architectural Composition Shingles	Wood Shake
Weight	Excellent 1.4 psf 6.8 kgf/m ²	Poor 9-15 psf 43.9 ~ 73.2 kgf/m ²	Fair 6 psf 29.3 kgf/m ²	Fair 3-4 psf 14.6 ~ 19.5 kgf/m ²	Fair 3-5 psf 14.6 ~ 24.4 kgf/m ²
Fire	Excellent Class "A" Fire Rating	Poor Roofs can warp or collapse from weight	Poor Most are Class "C" Rated	Fair	Poor Fire Hazard
Wind	Excellent 120 mph Wind Warranty	Poor Special Installation to meet High-Wind Requirements	Poor Most Manufacturers do not Offer Wind Warranties	Poor Most wind warranties are valid for 5 years	Poor No wind warranty
Hail	Excellent 2.5" Hail Warranty	Fair Crack & Break	Good	Poor	Poor
Snow & Ice	Excellent Interlocking Design Protects Against Ice	Poor Breaks from Freeze / Thaw & Weight of Ice/Snow	Fair Breaks from Freeze / Thaw & Weight of Ice/Snow	Poor Ice Removes the Protective Granules	Good
Earthquakes	Excellent Lightweight + Added Sheer Strength	Poor	Good	Good	Good
Warranty	Excellent Limited Lifetime Warranty No Proration	Good No Appearance Warranty	Fair No Warranty for Color Fading	Fair Pro-Rated Warranty	Poor No Warranty
Energy Efficiency	Excellent Recyclable	Fair	Fair	Poor	Fair
Resale Value	Excellent Increases Curb Appeal; Transferable Warranty	Good	Fair	Fair	Fair
Ratings based on comparison with Allmet as determined from manufacturer's specification, independent testing laboratories and published industry studies and statistics. *Requires additional nails, clips and/or details in high wind areas.					

REPORTS & ACCREDITATIONS:

- ICC Evaluation Report ESR-1286
- Texas Department of Insurance Report RC-40
- State of Florida Report FL 14984; FL 16449
- Miami-Dade Report NOA 12-0320.28; 12-1002.31
- Miami-Dade Report NOA 12-1002.32; 10-0727.04
- Canada CMCC Report No. CCMC 13449-R; 13444-R



Canadian Office:
 Highway #3 #581
 Courtland, Ontario Canada N0J 1E0
 Phone: 1-800-265-9357
 Fax: 1-519-688-2201

USA Office:
 1632 Third St.
 Leesburg, FL 34748
 Phone: 1-866-919-7663
 Fax: 1-352-326-5063