



ALLMET

PREMIUM STONE-COATED METAL ROOFING

Signature Series

CONTINENTAL SHADOWLINE WOODSHAKE

Beautiful and Dependable

THE BEST PROTECTION




Wind. Allmet's stone-coated metal roofing systems have been independently evaluated and tested, surpassing industry standards for high-velocity winds and wind-driven rain. Unlike other manufacturers that only offer wind warranties for a limited time, or not at all, our 120 MPH wind warranty is good for life.



Hail & Ice. Through careful research and testing, we have developed 26-gauge steel panels that will stand up to a beating! Our **Class 4** impact rating and 2.5" hail stone warranty will allow you and your insurance company to rest easily. Allmet's installation methods also offer superior protection against snow and ice damming.



Fire. Allmet's non-combustible steel panels keep fire at bay. The interlocking design of our roofing systems repel dangerous wind-blown embers and our lightweight system reduces the risk of roof collapse. In the city or country, our **Class A** fire-rated roofing system will keep you safe. Visit us online to read our clients' true fire-related stories.



For Life!

THE FINAL ROOFING SYSTEM

Allmet has over 30 years' experience in the roofing industry and distributes its products worldwide.

Our roofing systems are designed to be the last roof your home will ever need. Allmet's stone-coated steel roofing systems help to protect against extreme weather conditions, such as fires and fierce winds, without sacrificing the architectural look and beauty of your home.

Stone-coated steel roofing panels add the benefits of safety and durability. Your Allmet roof will prove to be a long-lasting, virtually maintenance free addition to your home.

Allmet uses a unique blend of earth stone granules to emulate the natural hues and beauty of traditional roofing.

Will Never Crack or Break

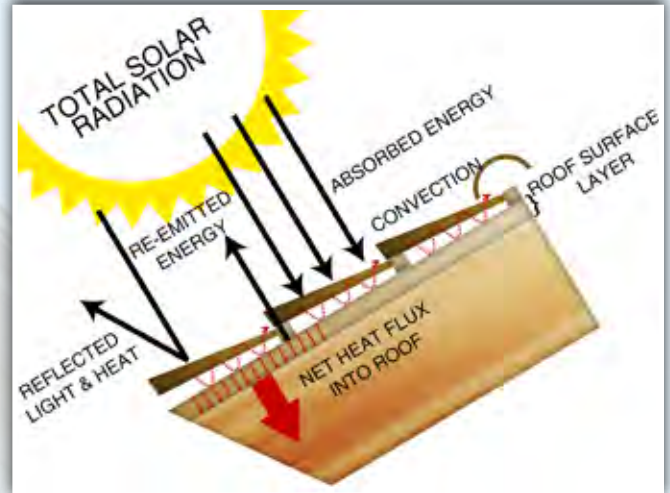
Impact and weather tested, an Allmet roof will provide long-lasting security and protection from hail, snow, wind and fire. In most cases, an Allmet roof may reduce your insurance premiums - please ask your insurance agent for more details.

The Best Warranty Allmet delivers the best roofing warranty in the business! By choosing Allmet, you are choosing the most time-tested roofing system available. With the best transferable warranty in the business, chances are others, namely the future homeowner, will also benefit from your smart decision.

HEAT GAIN REDUCTION

The Allmet stone-coated steel roofing system reduces heat transfer by as much as 45% more than conventional asphalt roofing. Allmet uses highly UV-reflective granite stone chips which are bonded and sealed to the tough zinc-aluminum steel substrate.

The Allmet system allows air to pass between the deck and panels. When air convection is combined with the highly reflective Allmet steel and stone roof, the result is one of the most energy efficient and eco-friendly systems in the world.



INSTALLATION

Batten Installation. Allmet's Signature Series roofing systems are installed on a batten or counter-batten grid. This creates a larger air space, substantially reducing heat transfer in the hot summer months. In cooler climates the air space helps stabilize the roofing temperature, substantially reducing ice damming. With this system, you will take full advantage of integrated home energy efficiencies.



A Dry Under-Deck System. When Installed as designed, Allmet's interlocking roofing is a dry under-deck system.

Brackets. A special Universal J-Bracket can be installed with all batten systems. They provide a clean, weatherproof installation using a strong, galvanized Universal J-Bracket that can be used for mounting solar panels, air conditioners, evaporative coolers, roof walkways and more to the roof.

ONLINE

Our website, www.allmet.com, is a great resource to learn more about how our products will benefit you. Here you can view our full range of roofing products and many photo galleries. You may also find our Roofing Cost Calculator and customer testimonials helpful.

On our website, you will find the contact information for your local Allmet representative, who can answer your questions and supply a list of factory-trained installers.



AVAILABLE COLORS



810 - Terracotta



812 - Mission Terracotta



815 - Clay



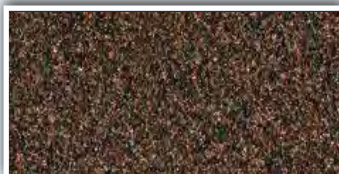
817 - Mission Clay



860 - Autumn Gold



861 - Autumn Leaf



880 - Chestnut



899 - Café



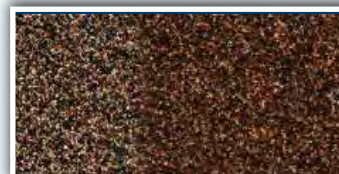
811 - Jasper



863 - Evergreen



824 - Almond



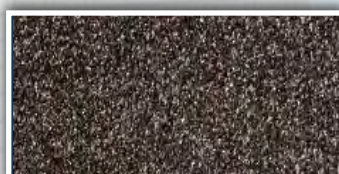
825 - Sandalwood



831 - Weathered Stone



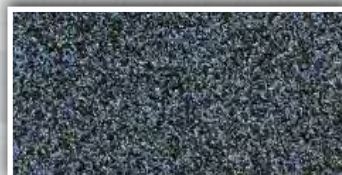
832 - Weathered Wood



836 - Natural Slate

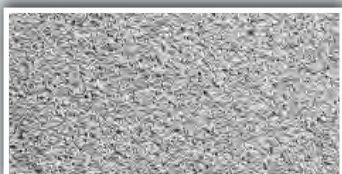


837 - Natural Wood



853 - Storm Blue

ENERGY STAR COLORS



846 - Dover White



824 - Driftwood



Most Energy Efficient. No matter the color or climate, Allmet's attractive stone-coated, poured acrylic coatings look great while delivering the best protection and efficiency. Our roofing system allows air to pass between the deck and the panels making them extremely efficient in hot or cold weather.

Note: Printed swatches have a slight color variance than the actual panel color.

*Standard Variegated Colors may require up to 2 weeks lead time. **Standard Blended Colors may require between 2 to 4 weeks lead time. All other color combinations are considered special orders and may require a 3 to 6 week lead time. On special colors, Allmet reserves the right to ship and invoice any production overages up to 5% above order quantities.

Item #	Color	Continental	Shadowline	Woodshake
824	Almond			S**
860	Autumn Gold	S*		
861	Autumn Leaf	S**		
899	Café			S*
880	Chestnut			S**
815	Clay	S**		
846	Dover White			
845	Driftwood			
863	Evergreen			
811	Jasper	S**		
817	Mission Clay	S*		
812	Mission Terracotta	S*		
836	Natural Slate			S**
837	Naturalwood			S*
825	Sandlewood			S*
853	Storm Blue			
810	Terracotta	S**		
831	Weathered Stone		S**	S**
832	Weathered Wood			S*

Continental Tile



ALLMET CONTINENTAL

The beauty of barrel tile roofing takes a giant leap forward with an Allmet Continental roofing system.



Jasper

Allmet roofing systems offer the freedom of choosing a product that fits your aesthetic wants without sacrificing performance. Allmet's roofing systems only weigh 1.4 lbs per square foot, which is one-seventh the weight of traditional tile products.

Additionally, the lightweight Allmet system provides safety by reducing the threat of roof collapse. Unlike cement or clay, our metal roofing tiles will never crack, split, break or absorb moisture.





Autumn Leaf



Terracotta



Clay



Autumn Gold



Mission Terracotta



Mission Clay



Woodlake Tile

ALLMET WOODSHAKE

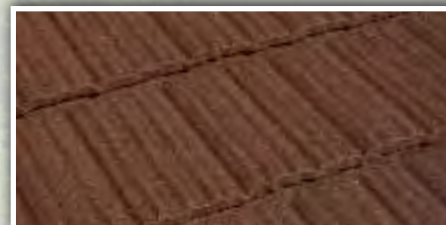
Allmet's Woodshake profile offers the best of both worlds, delivering the look of woodshake with the strength and security of steel.

Conventional woodshake is highly flammable, commands higher insurance premiums and is prohibited in some states.

Our stone-coated metal roofing tiles look great and will never need the costly maintenance or upkeep that natural woodshake roofs require.



Café



Chestnut



Historical Church Constructed in 1901. Re-roofed using an Allmet Woodshake stone-coated metal roofing system to preserve historical appearance.



Natural Wood



Sandalwood



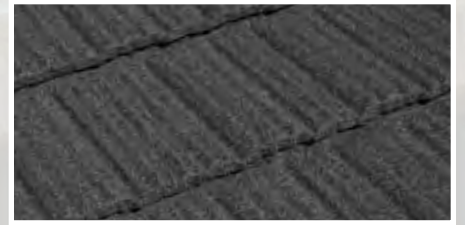
Weathered Wood



Natural Slate



Almond



Weathered Stone



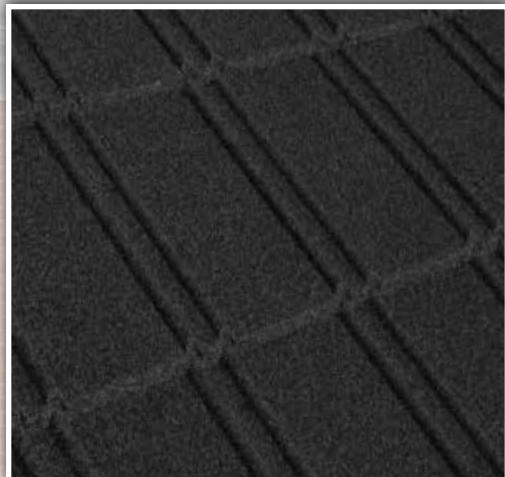
Shadowline Tile



ALLMET SHADOWLINE

Allmet's Shadowline profile has the look of high-end slate roofing without the excessive weight or inherent problems associated with conventional stone tile.

Unlike cement and clay tiles, Allmet's metal roofing systems will never crack, split, break or absorb moisture.



Weathered Stone





TESTIMONIAL

"Although we sustained considerable damage I am very happy to inform you no one was hurt and our Allmet roof is completely intact, with not so much as a loose shingle. You said it would hold up in a tornado, I'm writing to tell you it will!"

Bill and Carol J.

"The new roof has provided a definite improvement to the overall look of our house. There is no obvious metal look to the roof and we are really enjoying the smartened appearance."

Jack A.



Protection & Benefits	Allmet Roofs	Concrete Tile & Shake	Fiber-Cement Tile & Shake	Architectural Composition Shingles	Wood Shake
Weight	Excellent 1.4 psf 6.8 kgf/m ²	Poor 9-15 psf 43.9 ~ 73.2 kgf/m ²	Fair 6 psf 29.3 kgf/m ²	Fair 3-4 psf 14.6 ~ 19.5 kgf/m ²	Fair 3-5 psf 14.6 ~ 24.4 kgf/m ²
Fire	Excellent Class "A" Fire Rating	Poor Roofs can warp or collapse from weight	Poor Most are Class "C" Rated	Fair	Poor Fire Hazard
Wind	Excellent 120 mph Wind Warranty	Poor Special Installation to meet High-Wind Requirements	Poor Most Manufacturers do not Offer Wind Warranties	Poor Most wind warranties are valid for 5 years	Poor No wind warranty
Hail	Excellent 2.5" Hail Warranty	Fair Crack & Break	Good	Poor	Poor
Snow & Ice	Excellent Interlocking Design Protects Against Ice	Poor Breaks from Freeze / Thaw & Weight of Ice/Snow	Fair Breaks from Freeze / Thaw & Weight of Ice/Snow	Poor Ice Removes the Protective Granules	Good
Earthquakes	Excellent Lightweight + Added Sheer Strength	Poor	Good	Good	Good
Warranty	Excellent Limited Lifetime Warranty No Proration	Good No Appearance Warranty	Fair No Warranty for Color Fading	Fair Pro-Rated Warranty	Poor No Warranty
Energy Efficiency	Excellent Recyclable	Fair	Fair	Poor	Fair
Resale Value	Excellent Increases Curb Appeal; Transferable Warranty	Good	Fair	Fair	Fair

Ratings based on comparison with Allmet as determined from manufacturer's specification, independent testing laboratories and published industry studies and statistics. *Requires additional nails, clips and/or details in high wind areas.



REPORTS & ACCREDITATIONS

State of Florida FL 14984
 Texas Department of Insurance RC-40
 ICC Evaluation Services ESR-1286
 Miami Dade County NOA 12-0320.28
 CCMC 13444-R; UL/ULC R16378 UL2218 CL4



Canadian Office:
 Highway #3 #581
 Courtland, Ontario Canada N0J 1E0
 Phone: 1-800-265-9357 or 519-688-2200
 Fax: 1-519-688-2201

USA Office:
 1632 Third St.
 Leesburg, FL 34748
 Phone: 866-919-7663
 Fax: 352-326-5063